

PRODUCT INFORMATION PACKET

Model No: 056T11F15521
Catalog No: K701A
1,1200,TEFC,56HC,3/60/230/460
Totally Enclosed Fan Cooled (TEFC)



Regal and Marathon are trademarks of Regal Beloit Corporation or one of its affiliated companies.
©2018 Regal Beloit Corporation, All Rights Reserved. MC017097E



Nameplate Specifications

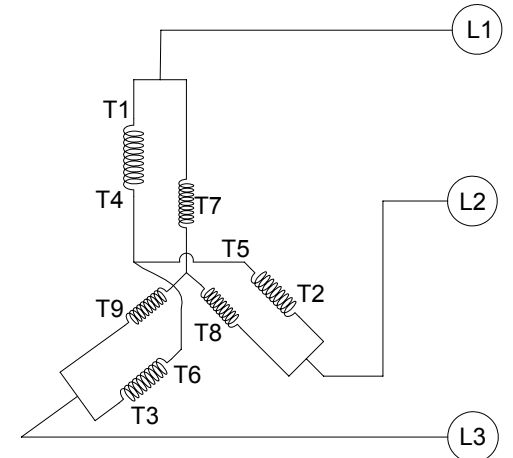
| | | | |
|----------------------------|------------------------------------|------------------------|-------------------|
| Output HP | 1 Hp | Output KW | 0.75 kW |
| Frequency | 60 Hz | Voltage | 230/460 V |
| Current | 3.8/1.9 A | Speed | 1140 rpm |
| Service Factor | 1.15 | Phase | 3 |
| Efficiency | 82.5 % | Duty | Continuous |
| Insulation Class | F | Design Code | B |
| KVA Code | L | Frame | 56HC |
| Enclosure | Totally Enclosed Fan Cooled | Overload Protector | No |
| Ambient Temperature | 40 °C | Drive End Bearing Size | 6205 |
| Opp Drive End Bearing Size | 6203 | UL | Recognized |
| CSA | Y | CE | Y |
| IP Code | 43 | | |

Technical Specifications

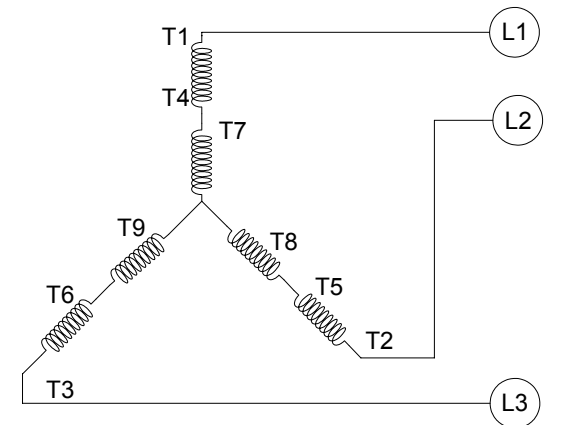
| | | | |
|-----------------------|------------------------------------|-----------------------|---------------------------------|
| Electrical Type | Squirrel Cage Induction Run | Starting Method | Across The Line |
| Poles | 6 | Rotation | Reversible |
| Mounting | Bolt-on Base | Motor Orientation | Horizontal Or Up Or Down |
| Drive End Bearing | Ball | Opp Drive End Bearing | Ball |
| Frame Material | Rolled Steel | Shaft Type | T |
| Overall Length | 15.15 in | Frame Length | 9.65 in |
| Shaft Diameter | 0.625 in | Shaft Extension | 1.87 in |
| Assembly/Box Mounting | F1 Only | | |
| Outline Drawing | OL56100003-003 | Connection Diagram | CDTD103 |

This is an uncontrolled document once printed or downloaded and is subject to change without notice. Date Created: 07/02/2018

CCW LOW VOLTAGE



CCW HIGH VOLTAGE



VIEW OF TERMINAL END

- NOTE:
1. TO REVERSE ROTATION, INTERCHANGE ANY TWO LINE CONNECTIONS TO L1, L2, OR L3.
 2. CONNECTION DIAGRAM-NAMEPLATE DD10038

| | | |
|---|------------------------------|--------------------|
| DRAWING REVISION A | REVISION BY G. RODRIGUEZ | DATE 07-06-2016 |
| ECO | APPROVED BY R. VALENZUELA | DATE 07-06-2016 |
| ECO DESCRIPTION | | |
| <small>COPYRIGHT REGAL BELOIT AMERICA, INC. ALL RIGHTS RESERVED. PROPRIETARY AND CONFIDENTIAL INFORMATION - THIS DOCUMENT IS THE PROPERTY OF REGAL BELOIT AMERICA, INC. (OWNER) AND CONTAINS OWNER'S PROPRIETARY INFORMATION. ANY PERSON, CORPORATION OR OTHER FIRM RECEIVING IT IS DEEMED, BY RECEIVING IT, TO AGREE THAT IT, AND/OR ANY PART OF IT, SHALL NOT BE DISCLOSED TO ANY PERSON, CORPORATION OR OTHER ENTITY, DUPLICATED, AND/OR USED, EXCEPT AS EXPRESSLY APPROVED IN WRITING IN ADVANCE BY OWNER. THIS DOCUMENT SHALL BE RETURNED TO OWNER UPON REQUEST. IT MAY BE SUBJECT TO CERTAIN RESTRICTIONS UNDER APPLICABLE EXPORT CONTROL LAWS AND REGULATIONS.</small> | | |

| | |
|--|-------------------|
| TOLERANCES UNLESS OTHERWISE SPECIFIED: | |
| DEC. | INCH mm ANGLE |
| .X | +0.1 [-2.5] ±0.5° |
| .XX | ±0.01 [±0.25] |
| .XXX | ±0.005 [±0.127] |
| .XXXX | ±0.0005 [±0.0127] |
| REMOVE BURRS & BREAK SHARP | |
| EDGES: .003/.015 [.076/.381] | |
| CORNER FILLETS: .02 [.51] | |
| MACHINED SURFACES: 125/3.2 | |
| mm SHOWN IN [BRACKETS] | |

| | |
|------------------------------|--------------------|
| DRAWN BY G. RODRIGUEZ | DATE 07-06-2016 |
| APPROVED BY R. VALENZUELA | DATE 07-06-2016 |
| REFERENCE SKT52A105383CA | MATERIAL |
| THIRD ANGLE PROJECTION | PROCESS/FINISH |

| | |
|--------------------------------------|---------------------------|
| Regal Beloit America, Inc. | |
| DESCRIPTION CONN DIAGRAM-EXTERNAL | |
| SIZE B | DRAWING NUMBER CTDT103 |
| SHEET 1 OF 1 | |

